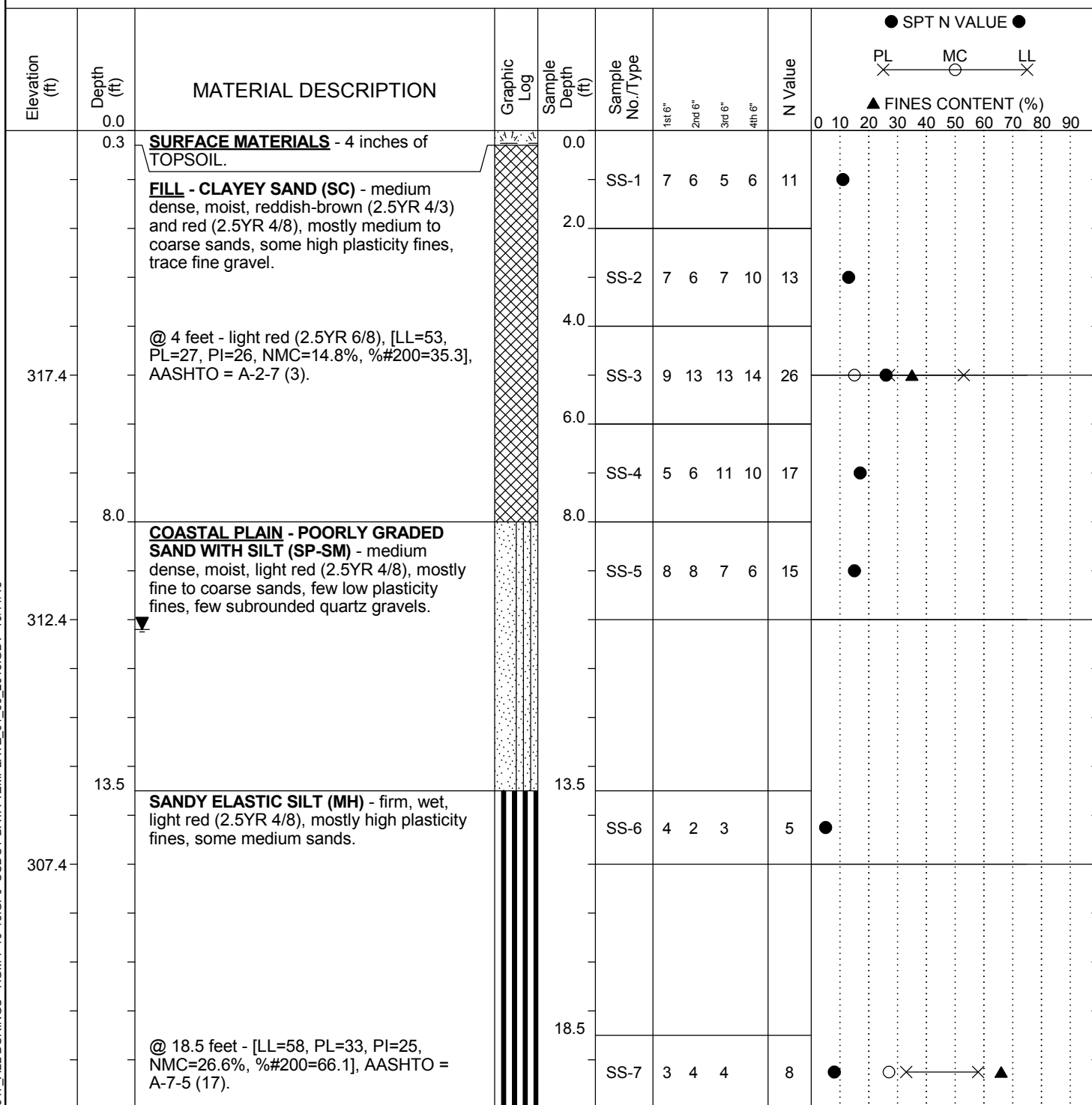


SCDOT Soil Test Log

Project ID:		P027662			County:		Lexington/Richland		Boring No.:		B-59		
Site Description:		Carolina Crossroads I-20/26/126 Corridor Improvement Project								Route:		Site 37	
Eng./Geo.:		ELF/MFC		Boring Location:			206+15.30		Offset:		R:154.848		
Elev.:		322.4 ft		Latitude:		34.039279		Longitude:		-81.092863		Date Started:	
Total Depth:		119.6 ft		Soil Depth:		110 ft		Core Depth:		9.6 ft		Date Completed:	
Bore Hole Diameter (in):		3.5		Sampler Configuration			Liner Required:		Y		Liner Used:		
Drill Machine:		CME 55		Drill Method:			RW		Hammer Type:		Automatic		
Core Size:		NQ		Driller:			T. Miller		Groundwater:		TOB		
									N/A		24HR		
											10.2 ft		



LEGEND

Continued Next Page

SAMPLER TYPE		DRILLING METHOD	
SS	- Split Spoon	HSA	- Hollow Stem Auger
UD	- Undisturbed Sample	CFA	- Continuous Flight Augers
AWG	- Rock Core, 1-1/8"	DC	- Driving Casing
NQ	- Rock Core, 1-7/8"	RW	- Rotary Wash
CU	- Cuttings	RC	- Rock Core
CT	- Continuous Tube		